



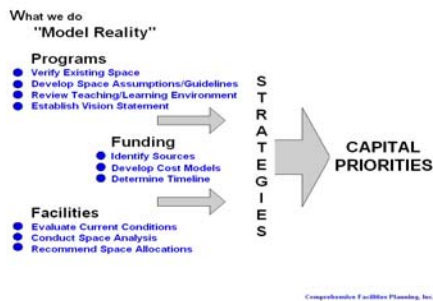
Comprehensive Facilities Planning, Inc. (CFP) is a highly specialized facility planning firm, incorporated in the State of Ohio January 1994. The firm consists of six principal partners with diverse planning and programming experience, and three administrative/technical planning assistants.

As higher education institutions define and implement their vision of the future, a comprehensive approach to planning for that future is essential. CFP's approach to long-range planning integrates academic goals and programmatic needs with practical analyses to create a data informed guide to the physical development of the campus. A summary of our professional services include:



- Space Allocation and Assessment Studies
- Space Needs Guidelines and Management Procedures
- Classroom and Laboratory Utilization Studies
- Facility Needs and Condition Assessments
- Inventory Verification and Space Audits
- Benchmark Comparisons
- Capital Planning
- Facilities Programming

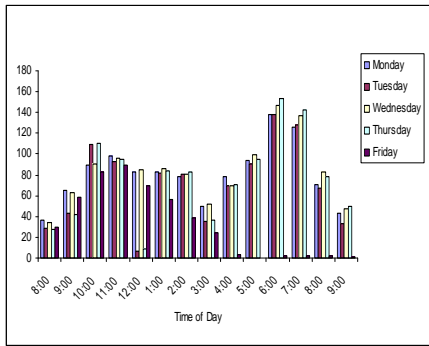
The firm has expertise in many other planning areas, such as academic, strategic, and security planning. Our analytical process includes the application of a unique, dynamic software system (SIMS 2000®) designed to analyze existing space and project future space needs. At CFP, our higher education team has extensive hands-on experience in the key disciplines important to a comprehensive, cohesive space planning effort. Our expertise includes:



- Understanding the business of higher education, where facilities design must balance with the institution's need for operational efficiency and sustainability, and cost-effectiveness;
- Understanding the importance of space management, not only as a planning tool, but as a resource for effective decision making;
- Understanding the academic mission and vision of an institution and how it is conveyed through diverse programs and embodied through its faculty and buildings;
- Understanding the need to develop space planning guidelines and utilization rates that reflect the culture of the campus;
- Understanding the importance and viability of making practical recommendations that can be implemented in a timely manner within the realities of funding and political constituencies.



CFP is an innovative planning firm grounded in the knowledge of planning criteria and standards. While established national guidelines and standards that CFP principals helped develop years ago may be relevant in some cases, we also apply current trends and teaching philosophies in higher education and evaluate them for accuracy and relevance for each institution's unique campus culture. Teaching, research, and service endeavors change as new technologies and



programs emerge. Our space guidelines and formulae customize for each client based on the local campus environment.

Our professional services utilize a *Space Information Management System (SIMS 2000®)* designed and developed to assist in the assessment of the institutions space. The base system provides a systematic method to record space data about each campus, building, room, and property owned or managed by the institution. This information is organized, analyzed and reported in various ways so that campus administrators, governing boards and others can be provided with accurate, reliable, and timely information for space management decisions. The system is adaptable to changing campus needs via the many user defined “mapping tables.”

Our utilization and assessment service provides the following:

- Integrated Tools - *flexible planning capabilities customized for each Institution*
- Empowers Users - *places control of data in end user's hands*
- Innovative - *solving problems/creating solutions*
- Resources - *experienced and knowledgeable planners*

Brief Profile of the Firm

- More than 15 years of professional services to the higher education market
- Nearly 200 years of combined experience in facilities planning and space management.
- Previous work experience as faculty and administrators at various colleges and universities gives an empathetic and solutions-oriented perspective to most of the facilities problems that an institution faces.
- Expertise in academic planning, financial planning, facilities planning, and strategic planning that are combined into a realistic model for the future development of a campus.
- Conducted more than 50 classroom utilization and condition studies for colleges and universities and more than 100 space utilization/needs assessments.
- Team members with over 80 clients ranging from small private liberal arts colleges to the largest public universities.
- Developed a space information and management software system that provides a powerful analytical resource for efficiently and effectively analyzing various options for addressing space requirements.
- Planned hundreds of capital projects during our careers ranging from classroom facilities to highly sophisticated research facilities.
- Published numerous books and articles on various topics including space planning guidelines, program of requirements guidelines, and classroom design standards and presented program topics at almost 50 conferences and seminars nationally and internationally.

